

THE FOLLOWING SYSTEM DESIGN SPECIFICATION IS FOR THE INSTALLATION OF A BRAND NEW FIRE ALARM SYSTEM AT THE ABOVE PREMISES.

THE FIRE DETECTION AND FIRE ALARM SYSTEM WILL BE DESIGNED, INSTALLED AND COMMISSIONED IN ACCORDANCE WITH BS5839-1: 2017. (A FULL BAFE CERTIFICATE SHALL BE ISSUED WHEN APPROPRIATE).

DESIGN STATEMENT

THE QUOTATION/ SPECIFICATION FOR THE EQUIPMENT AND INSTALLATION ARE PER THE INFORMATION PROVIDED BY THE CLIENT AT THE TIME OF THE SURVEY TO CATCHPOINT UK LTD. THE SYSTEM WILL BE CONTROLLED BY A BRAND NEW ADDRESSABLE FIRE ALARM PANEL, MANUAL CALL POINTS, AUTOMATIC DETECTION, INTERNAL SOUNDER BEACONS AND VISUAL ALARM DEVICES.

IT SHALL BE THE CLIENTS RESPONSIBILITY TO VERIFY THAT THE FIRE ALARM PROPOSED WITHIN THIS SPECIFICATION MEETS WITH THE REQUIREMENTS OF ANY INTERESTED PARTY, I.E. INSURERS, BUILDING CONTROL OFFICERS, FIRE AND RESCUE SERVICES ETC.

THE SYSTEM IS DESIGNED FOR A CATEGORY L1 TYPE FIRE DETECTION AND FIRE ALARM SYSTEM

FIRE CABLE  
ALL NEW CABLING FOR THE FIRE ALARM SYSTEM WILL BE 2 CORE 1.5MM STANDARD RATED FIRE CABLE.  
VARIATIONS FROM DESIGN

INTRUDER ALARM SIGNALLING DEVICE LINKED TO FIRE ALARM

STANDARD BATTERY PERIOD

THE SYSTEM SHALL BE PROVIDED WITH BATTERIES TO POWER THE SYSTEM FOR A MINIMUM OF 24 HOURS IN STANDBY AND ADDITIONAL 30 MINUTES IN ALARM.

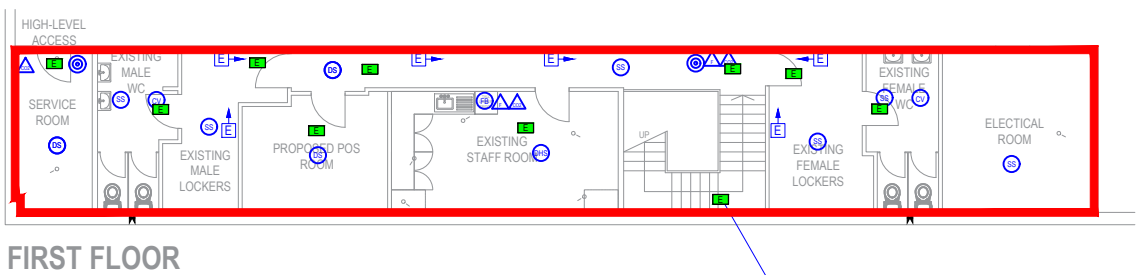
DESIGN DRAWING

THE SYSTEM SHALL BE INSTALLED IN ACCORDANCE WITH THE ATTACHED DRAWING  
NUMBER: 34990 REVISION: 2 DATED: 27/08/2025

CONTROL EQUIPMENT

A 230 VOLT MAIN SUPPLY FOR THE FIRE ALARM IS TO BE SUPPLIED BY OTHERS, IN SOFT SKIN STANDARD FIRE CABLE.  
LIST OF EQUIPMENT

- 1 X 2 LOOP ADDRESSABLE FIRE ALARM PANEL C/W 2 LOOP CARDS
- 63 X OPTICAL SMOKE DETECTORS
- 4 X HEAT DETECTORS
- 38 X INTEGRATED SOUNDER BASES
- 29 X STANDARD BASSES
- 2 X BATTERIES
- 3 X CEILING MOUNTED VAD C-3-8 RED BODY RED LENS
- 9 X ADDRESSABLE SOUNDER BEACONS
- 1 X CONVENTIONAL SOUNDER BEACON
- 19 X MANUAL CALL POINTS
- 2 X EXTERNAL IP RATED SOUNDER BEACONS
- 2 X EXTERNAL MANUAL CALL POINTS
- 10 X INTERFACES



AREA APPROVED FOR THE SALE/STORAGE OF ALCOHOL

Licence for sale of alcohol to cover whole of trading area to allow for flexibility of display - Alcohol display will be less than 10% of trading area.

EMERGENCY LIGHTING KEY

- MTEC2/10E
- EMERGENCY LIGHT SWITCH
- LED 3W TWIN SPOT EMERGENCY FLOOD LIGHT
- MAINTAINED EMERGENCY EXIT SIGN
- NON MAINTAINED EMERGENCY BULKHEAD


No.	Interface list:	Input / Output
1	Entrance Lobby Doors	Output
2	Exit Lobby Doors	Output
3	Shop Floor Entrance Doors	Output
4	Shop Floor Exit Doors	Output
5	Monitoring (In Cash Office)	Output
6	Front Garden centre auto doors	Output
7	Rear Garden centre auto doors	Output
8	Garden centre gate	Output
9	Service Yard gate	Output
10	Gas solenoid	Output

PLEASE NOTE:  
All auto doors Interfaces must be no more than 1M away from the door

PLEASE NOTE:  
SYSTEM TO BE MONITORED

FIRE DETAIL KEY	
F.P	ADDRESSABLE FIRE PANEL
F.P.R	FIRE PANEL REPEATER
➡	DIRECTIONAL FIRE EXIT
⚡	ILLUMINATED FIRE ESCAPE SIGN
⚡	EMERGENCY LIGHTING
⊙	MANUAL CALL POINT WITH SCI
⊙	EXTERNAL MANUAL CALL POINT WITH SCI
🔊	WALL MOUNTED SOUNDER VID
🔊	WALL MOUNTED EXTERNAL SOUNDER VID
🔊	WALL MOUNTED CONVENTIONAL SOUNDER VID
⊙	DETECTOR HEAT
⊙	DETECTOR HEAT & SOUNDER BASE WITH SCI
⊙	DETECTOR SMOKE
⊙	DETECTOR SMOKE IN VOID
⊙	DETECTOR SMOKE IN ROOF
⊙	DETECTOR SMOKE & SOUNDER BASE WITH SCI
⊙	DETECTOR SMOKE & VAD BASE WITH SCI
⊙	CEILING MOUNTED VAD (NO SOUNDER) (C-3-8)
🔊	SPRINKLER HEAD
🔊	FOAM FIRE EXTINGUISHER
🔊	WATER FIRE EXTINGUISHER
🔊	POWDER FIRE EXTINGUISHER
🔊	CO2 FIRE EXTINGUISHER
⊙	BEAM TO BEAM DETECTOR
⊙	FIRE BLANKET
⊙	BEAM IN VOID
⊙	INDICATOR
⊙	INPUT / OUTPUT UNIT
⊙	INTERFACE AUTOMATIC DOORS
⊙	INTERFACE SPRINKLER SYSTEM
🔊	EXISTING BEAM
FOAM EXTINGUISHERS RATED AT 21A/14AB	

FIRE EXIT PROVISIONS - RETAIL UNIT		EXIT WIDTHS / PERSONS		5.0 mm
MAX. SINGLE DIRECTIONAL TRAVEL DISTANCE		18 m		
MAX. TWO-DIRECTIONAL TRAVEL DISTANCE		45 m		
OCCUPANCY		2 m2/PERSONS		
		Sales Areas		
		Ground Floor	First Floor	
COMPARTMENT AREA (m2)		2,661.7	0.0	
OCCUPANCY (PERSONS)		1,331	0	
REQUIRED OPENING (mm)		6,655	0	
(TOTAL PEOPLE X 5mm PER PERSON EXIT WIDTH)				
FIRE EXIT WIDTHS (mm)				
MAIN ENTRANCE/EXIT		1,600	0	
MAIN EXIT (IF APPLICABLE)		1,600	0	
GRP W/H DOORS (IF APPLICABLE)		1,615	0	
GARDEN CENTRE DOORS (IF APPLICABLE)		1,600	0	
F/E 1		1,554	0	
F/E 2		1,554	0	
F/E 3		1,600	0	
F/E 4		900	0	
F/E 5		0	0	
TOTAL CLEAR OPENING FROM COMPARTMENT				
FLOOR AREA (mm)		12,023	0	
EXCLUDE LARGEST OPENING (mm)		1,615	0	
FINAL CLEAR OPENING (mm)		10,408	0	

	<div>MADFORD (ARNOLD)</div>	TITLE: PROPOSED FIRE LAYOUT (GROUND & FIRST FLOOR)				SALES AREA		GROUND FLOOR	FIRST FLOOR	STANDARD MAY FOOTAGE				DISPLAY SPACE MAY EQUIVALENT		<div>SHELVING PROFILES</div> <div>HEIGHT</div> <div>DEPTH</div> <div>STANDARD WALL BAYS</div> <div>H2610</div> <div>D470</div> <div>STANDARD PARK BAYS</div> <div>H2610</div> <div>D670</div> <div>PANT DEPT WALL BAYS ARE A 4 POST BEARING SYSTEM WITH A 20% SUEW LIFT &amp; 40% OVERSUEW WITH BEARING BRACKETS</div> <div>STANDARD LOW LEVEL</div> <div>H1810</div> <div>D470</div> <div>STANDARD GONDOLA</div> <div>H1810</div> <div>D470</div> <div>EPU: PROMO ENDS</div> <div>H1810</div> <div>D470</div> <div>ALL TRIMMER PANELS, BOWEN CORNERS &amp; COLUMN JACKING TO BE INSTALLED AS REQUIRED ON DRAWING</div>													
		CLIENT: B&M RETAIL LTD.				WAREHOUSE		290.1 sqm	0.0 sqm	WALL BAYS		125.5	0	0	0														
		SITE ADDRESS: (FORMER HOMEBASE) MADFORD BUSINESS PARK MANSFIELD ROAD DAYBROOK NOTTINGHAM NG5 6AD				LAYOUT: DJ		FLOORS: 2		AMENITIES		GONDOLA BAYS		892	0				10	0									
		DRG No: BM-912-0-006				SCALE: 1:200@A1		GARDEN CENTRE (INC. GREENHOUSE)		NETT TOTALS		EXCLUDING END BAYS:		1027.5					PROMO END BAYS		55	0	2	0					
		DATE: 09.09.25				REVISION: -		TOTAL GROSS (ALL FLOORS)		TOTAL BAYS (INCLUDING END BAYS)		1084.5																	
DO NOT SCALE - USE FIGURED DIMENSIONS ONLY.					ALL DIMENSIONS MUST BE VERIFIED ON SITE AND ANY DISCREPANCIES NOTIFIED IMMEDIATELY TO THE SHOPFITTER. ALL DIMENSIONAL CHECKS MUST BE MADE PRIOR TO INSTALLATION.					REV					DATE					DESCRIPTION					DWN				